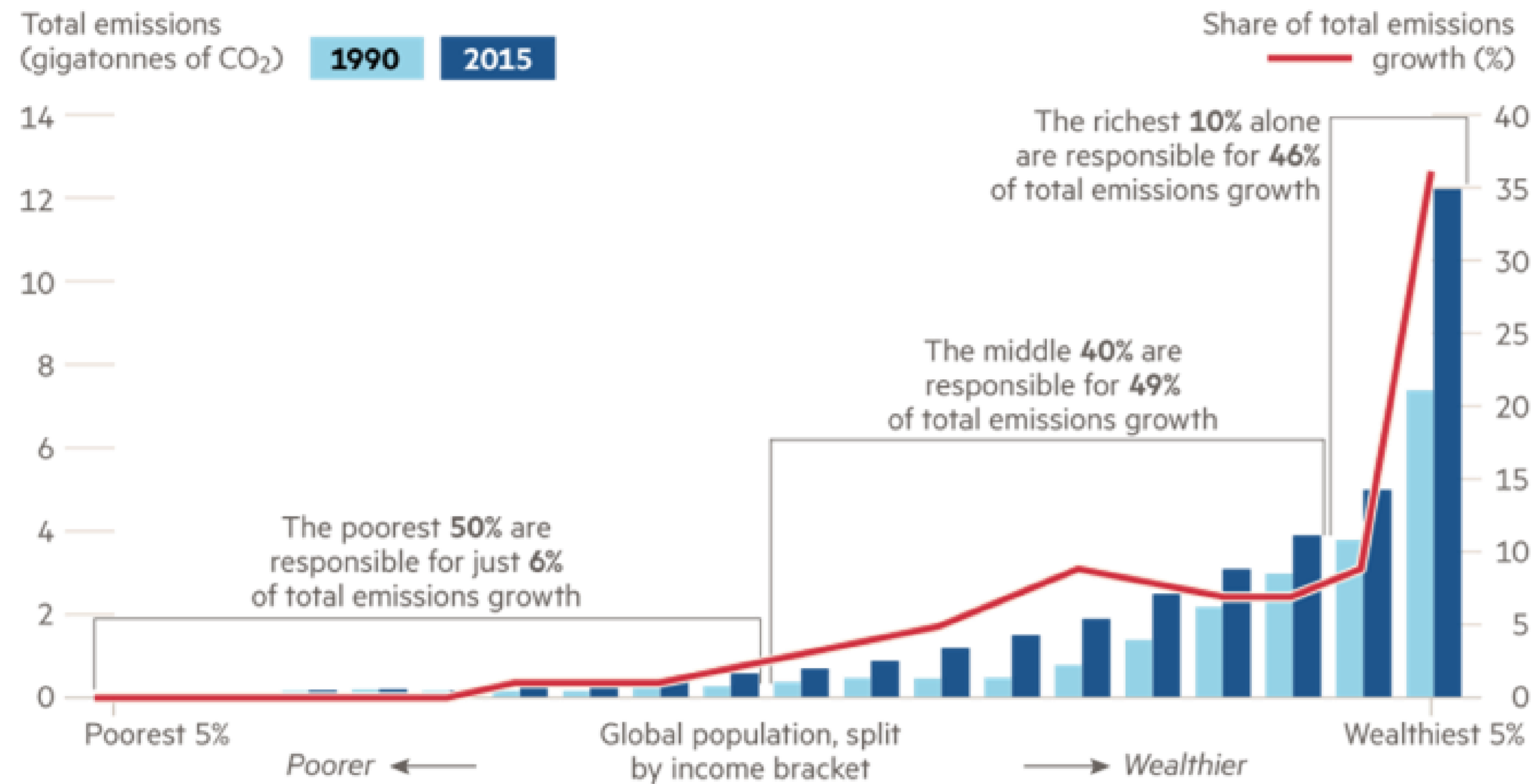


Consumption of richest 10% accounts for almost half of CO₂ emissions



Who are the rich?

Richest 10%

Annual income of £27,500

Richest 1%

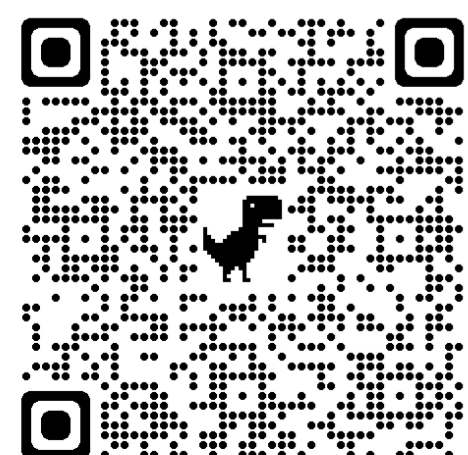
Annual income of £79,000

Source: Oxfam/Stockholm Environment Institute



Scan for more info

Visual journalism: Steven Bernard/@sdbernard and Chelsea Bruce-Lockhart/@C_BruceLockhart
Source: Oxfam
© FT



The City of London remains one of the largest global centres for financing fossil fuels, supporting at minimum 15% of potential global CO₂ emissions

Source: Carbon Tracker 2020

← Scan for report

